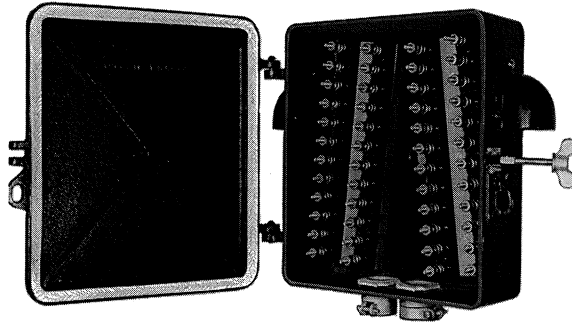


Surface and Pole Mounted Terminal Housings



Type 1236

Terminal housings used for cable connections, arrestors, resistors, transformers, etc.

Wood terminal boards are available for equipment mounting.

Available in a variety of configurations of terminal and cable entrances.

Housing descriptions, dimensions and some typical layouts found on the following pages.

All terminal housings made of cast iron except type 1236 which is cast aluminum

Ordering Information

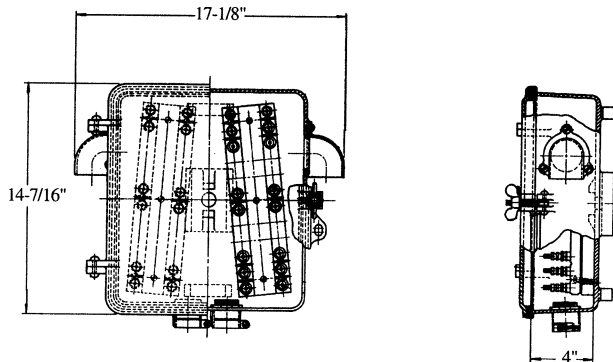
1. Select housing.
2. Specify terminal requirements. Terminals described on page 14-1.
3. Specify cable entrances required via illustrations 10.
4. Specify connectors. See page 8.
5. Specify ventilators and outlets.
6. Specify diameter of pole mounting required.

WESTERN-CULLEN-HAYES, INC.

2700 W. 36TH PLACE
(773) 254-9600

CHICAGO, IL. 60632
FAX (773) 254-1110

Type 1236 Terminal Housing



Type 1236 pole terminal housing can be equipped with as many as 48 binding posts. A 7/8" hole is provided in the back of the box for through bolt mounting on 4" or larger diameter pipe or on wood poles. Can also be surface mounted.

The type 1236 is also an excellent enclosure for resistors, small electrical components or can be equipped with type 2190 key switch mechanisms.

Inside dimensions: 13-1/4" high x 11-3/4" wide x 4".

WESTERN-CULLEN-HAYES, INC.

2700 W. 36TH PLACE CHICAGO, IL. 60632
 (773) 254-9600 FAX (773) 254-1110